



TABLE OF CONTENTS

CONTENTS

OVERVIEW	4
COMPONENTS	4
OPTIONAL PC REQUIREMENTS	5
INSTALLTION	5
CONNECTING THE T-MAX® TIMING SYSTEM	5
T-MAX® MANAGER TOUCH CONNECTIONS	6
POWER UP.....	7
SETTING THE ADDRESS.....	7
MANUAL OPERATION	10
DESCRIPTION	10
INITIAL CONFIGURATION	10
CONFIGURING THE T-MAX® MANAGER TOUCH	11
TIMER PARAMETERS	14
SECURITY LEVELS.....	15
CHECKING AND CHANGING MANAGER AND TIMER PARAMETERS	15
CHECKING TIMER PARAMETER NUMBERS	15
CHANGING TIMER PARAMETER VALUES	17
STARTING A SESSION	20
CANCELING A SESSION	22
PAUSING A SESSION	22
DIRTY ROOM	22
COOL DOWN MODE	23
COMPUTER OPERATION	23
EXPANSION	23
ADDING BEDS.....	23



User Guide

ADDING T-MAX® MANAGER TOUCH CONTROLLERS 24
OTHER FEATURES AND OPTIONS..... 24
 T-MAX® MONITOR/PLUS 24
 HIGH PRESSURE (SINGLESIDE) BEDS 24
 INSTALLING EXTERNAL SPEAKER (OPTIONAL) 25
 CONNECTING A REMOTE PUSH BUTTON TO THE T-MAX® 3W G2 (OPTIONAL) 25
 T-MAX® ENCLOSURE (OPTIONAL) 25
 FIGURE A - FRONT VIEW OF THE T-MAX® 3W G2 26
 FIGURE B - REAR VIEW OF T-MAX® 3W G2 CIRCUIT BOARD 26
 FIGURE C - T-MAX® MANAGER TOUCH..... 27
 FIGURE D - 485-ISO OPTICAL ISOLATOR 27
 FIGURE E - MULTIPLE CONFIGURATIONS 28
TROUBLESHOOTING 29
 TROUBLESHOOTING 29
 ERROR CODES 31

(C) COPYRIGHT 1995-2023 By Applied Digital, Inc.

The information in this manual is believed to be correct. However, Applied Digital, Inc. assumes no responsibility for any errors herein. This information is subject to change without notice, and should not be construed as a commitment by Applied Digital, Inc.

WARRANTY



User Guide

This product is warranted against defective materials and workmanship for a period of two years from the date of purchase. In the event the product fails to perform, it may be returned; Shipping Paid, to the factory to be serviced or replaced at the factory's discretion. Applied Digital, Inc, Inc. will pay to ship the repaired or replaced product by the shipping means of our choosing. Returns will not be accepted without a Return Authorization Number assigned by the factory.

It is a Condition of Sale that the user of Applied Digital Inc.'s products assumes all risk and responsibility of use and indemnifies Applied Digital, Inc. against all damages. Applied Digital, Inc. is not liable for loss of profits, lost savings, special, incidental, consequential, indirect or other similar damages arising from breach of warranty, breach of contract, negligence, or other legal action even if Applied Digital, Inc. or its agent has been advised of the possibility of such damages, or for any claim brought against you by another party. This warranty allocates risks of product failure between the purchaser and Applied Digital, Inc. Applied Digital, Inc.'s hardware pricing reflects this allocation of risk and the limitations of liability contained in this warranty. It is a violation of the stated warranty to cut or modify the provided modular cables supplied with the T-Max® Series Timers. Connecting the T-Max® Series to third party timers not approved by Applied Digital, Inc. also violates the stated warranty. Contact your dealer or Applied Digital, Inc. to determine if your third-party timer is approved by Applied Digital, Inc.





OVERVIEW

Congratulations on your purchase of Applied Digital, Inc.'s T-Max® Series of tanning bed timers. The T-Max® is designed for complete automation and control of your tanning equipment. It is also an excellent manual backup system in case your PC fails. The T-Max® Manager Touch can be used as a stand-alone unit or can be controlled with a computer using a number of popular software packages. Manual operation is accomplished via touch panel controls.

Note: Many tanning units are manufactured with T-Max® Certified timers built into them. These tanning beds can be controlled by the T-Max® Manager Touch without the need to have a T-Max® 3W G2 in the tanning room. Contact the tanning bed manufacturer to see if your tanning bed is supplied with a T-Max® Certified timer.

T-Max® Certified timers are timers manufactured by Applied Digital, Inc. Connecting timers not manufactured by Applied Digital, Inc. is not recommended and may not work the same as a T-Max® timer. Applied Digital, Inc. does not support timers connected to the T-Max® Manager Touch that are not manufactured by Applied Digital, Inc.

Manual operation is accomplished by a 7" capacitive Touchscreen interface. If the T-Max® Manager Touch loses power, the T-Max® 3W G2s can be used as standalone timers. As long as the T-Max® Manager Touch is active the T-Max® 3W G2s cannot be used as independent timers.

This manual should be reviewed by a licensed electrician prior to installing your new system. Check for compliance with local building codes.

COMPONENTS

T-Max® Manger Touch:

- 1 T-Max® Manager Touch Unit
 - 1 9-12V @ 1Amp Power Transformer
 - 1 USB Cable
- If any component(s) are missing contact your dealer.

Options:

G2 Access Point and G2 Power Injector (wireless adapter)

Allows the T-Max® System to be connected without the need to connect daisy-chain wires. Uses 900MHz for communications.

T-Max® Slave Kit

Required for each slave T-Max® Manager installed.

T-Max® Monitor/Plus

Connects anywhere in the T-Max® Series daisy-chain to provide 16 displays showing bed times and statuses.

485-ISO (Optional) Optical Isolator

Connects either after the T-Max® Manager Touch or in the middle of the daisy-chain. Protects system from power surges. Also acts as a repeater.



Specification:

Power Supply:

INPUT 120VAC
OUTPUT 9-12VDC @ 1Amp
CURRENT DRAW 1 Amp

Display:

T-Max® Manager Touch: 7" Diagonal Capacitive Color Touch Screen.

Maximum Units:

60 T-Max® 3W G2s or T-Max® Certified timers controlling up to 60 beds.
8 T-Max® Manager Touch controllers can be used to control up to 60 beds.
1 Computer can be connected to each T-Max® Manager Touch.

OPTIONAL PC REQUIREMENTS

- 1) 1MB available RAM.
- 2) 5.5Mytes available Hard Disk Drive Space.
- 3) Windows XP/2000/Vista/7/8/10/11.
- 4) USB 2 Port

INSTALLTION

CONNECTING THE T-MAX® TIMING SYSTEM

Note: Customers should not be in tanning beds when auto addressing beds.

Connections on the T-Max® Manager Touch



- ← RJ-22 for Wired T-Max® Connections
- ← RJ-11 to Connect to the T-Max® G2 Access Point for Wireless Installation
- ← USB-C to Connect to the PC for Computer Control
- ← Power IN 9-12V @ 1Amp



User Guide

STOP: Before connecting and powering T-Max® Manager Touch for the first time install a T-Max® 3W G2 in each room or equipment with a T-Max® Certified timer pre-installed. If the T-Max® Manager Touch is a replacement for another T-Max® Manager, then proceed to the next section on Power UP.

Option 1: Install a T-Max® G2 Wireless Access Point in each room and at the front desk for the T-Max® Manager Touch for the 900 MHz wireless network. Connect the 6 conductor RJ11 cable that was provided with the G2 Wireless Access Point to the T-Max® Manager Touch, T-Max® 3W G2 Timer or equipment supplied with a T-Max® Certified Timer.

Option 2: Install the 50' modular cable that is provided with each T-Max® 3W G2. Run one modular cable from the T-Max® Manager Touch location to T-Max® 3W G2 in the nearest tanning room. Run the other modular cables from room to room in a Daisy-Chain network. Connect the modular cables to each T-Max® 3W G2 and the T-Max® Manager Touch. When finished each T-Max® 3W G2 should have a modular cable connected to each port (**Figure B in the last section**), except for the last T-Max® 3W G2 in the series. If any of your tanning beds have a T-Max® Certified timer installed in it, your daisy chain cable will connect to that bed. Contact the tanning bed's manufacturer for location of the RJ-22 modular connection on those beds.

NOTE: Backbone or Star wiring networks are not recommended for T-Max® Timer Systems.

Option 3: Multiple T-Max® G2 Wireless Access Points can connect sections of rooms in a Daisy-Chained network together. This will eliminate the need for extra-long runs of cable. Refer to the T-Max® G2 Wireless guide for more information.

Note 1: Read the manual for equipment installed with T-Max® Certified Timer or Contact the manufacturer for the cable connection location.

Note 2: Once the G2 Wireless or Daisy-Chain network has been connected, provide power to the T-Max® 3W G2 as described in the T-Max® 3W G2 User's Guide or equipment with T-Max® Certified Timers.

T-MAX® MANAGER TOUCH CONNECTIONS

Connect the RJ-11 modular cable from the T-Max® G2 Access Point to the T-Max® Manager Touch or the RJ-22 cable from the tanning room to the RJ-22 modular connector on the T-Max® Manager Touch or the T-Max® G2 Access Point. Connect the 9V power supply provided with the T-Max® Manager Touch to the power input on the T-Max® Manager Touch and a 120VAC outlet. If you are using a computer, connect the USB-C cable between the USB-C port on the T-Max® Manager Touch and the USB port on your computer. If your computer does not recognize the USB drivers, they are available at our website listed below.

http://www.appdig.com/tmaxtimers/html/software_downloads.html .

POWER UP

- 1) Apply power to the T-Max® Manager Touch, the word Initializing will appear on a black screen.



- 2) The screen will change to the T-Max® Manager Touch logo. Loading... 5% will show in the bottom lefthand corner and will count to 100%.
- 3) The Software Version and the comm port # will show in the bottom righthand corner. The Software Version number followed by the Manager number (-0) by default. This is discussed in the Manager Setup Section.
- 4) After loading has reached 100%, the T-Max® Manager Touch will start scanning for timers (20 by Default) three times. T-Max® Manager Touch will find Timers that have an address and skip them on the next scan.

SETTING THE ADDRESS

- 1) After applying power to the T-Max® Manager Touch, wait until the T-Max® Manager Touch has finished scanning. If all the rooms show up on the T-Max® Manager Touch, then proceed to the next section.
- 2) Press the Configure button. The display will show the following:



User Guide



3) Enter the Security number for level 3 in accordance with the Security sheet provided with Your T-Max® Manager Touch.

4) After entering Security Level 3, the display will return to the home screen. A shield will now display a 3 inside the Shield. This will indicate that you have entered Security Level 3.





User Guide

5) To Auto Address, Press the Configure button to show the Security screen again. Enter an 888 for the Security Code, then Enter.



A confirmation page will appear to confirm Auto Address or not. If you are not ready Enter 0 otherwise Press 888 then Enter again to proceed. The display will read “Auto Addressing Bed... 001.”



Each T-Max® 3W G2 will show a 99 on their displays and beep continuously. Equipment with T-Max® Certified timers may show an ID followed by a number.

6) Go to each Certified T-Max® timer installed with each piece of equipment **in room number order** (1,2 3, 4, 5, 6 etc.) and press the Start/Stop buttons on that timer. Once that timer displays a 0 and the alarm stops, proceed to the next timer, until all timers have been addressed.

As you press the Start/Stop buttons in each room, the Maximum Bed Number on the T-Max® Manager Touch will automatically count up.



User Guide

If you want to skip a room number go back to the T-Max® Manager Touch and press the Up Arrow button until the display reads Auto Addressing the bed/room number that is next in line. Then continue to press the Start/Stop buttons on the timers in the order of room numbers you desire.

Note: If you are going to add room numbers later, press the Up Arrow until it shows auto addressing one room more than needed i.e., 21 to display 20 rooms. Refer the T-Max® 3W G2 User Guide or the Certified T-Max® timer manual from the equipment manufacturer.

7) When completed go back to the T-Max® Manager Touch and press the X Button. After a short pause, the T-Max® Manger Touch will reset, then scan and show the timers addressed. Installation is now complete.

MANUAL OPERATION

DESCRIPTION

The T-Max® Manager Touch has a 7” diagonal color touchscreen interface showing the times and statuses of up to 10 beds at a time. Press the Next or Previous button to scroll between the beds 1 through 10, 11 through 20, etc.; up to 60 beds.

INITIAL CONFIGURATION

Table 1 - T-Max® Manager Touch Parameter Table

The most common parameters that are set are parameters 1 (Delay), 2 (Auto Start Mode) and 3 (Max Bed Number). The other parameters are usually not changed.

Parm #	Name	Default #	Max #	Description
1	Delay Time	3	10	Time in minutes between when the session time has been sent when the session time will start counting.
2	Auto Start Mode	1	2	<p>Determines what the unit does once the delay time has elapsed.</p> <p>0 = Unit will not energize once the delay time expires.</p> <p>1 = Unit will energize once the delay time expires.</p> <p>2 = Infinite delay. Once a session starts, the customer will have as long as they need to get ready. The session time will show on the timer in the room with a status of delay and will not count down. The delay set in the T-Max® Manager Touch and the computer will be ignored.</p>

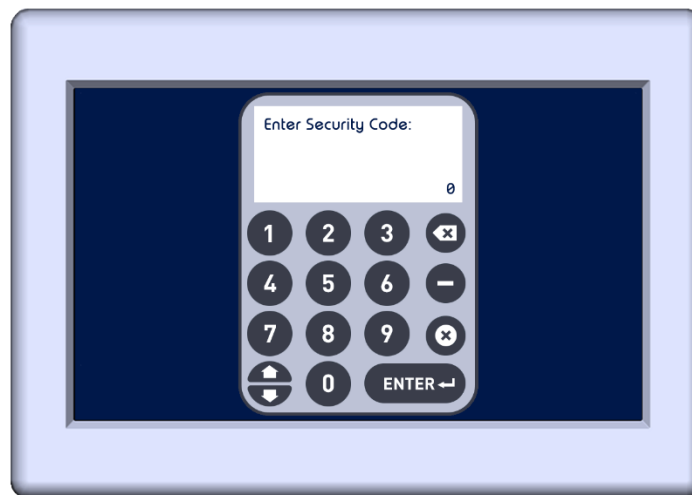


User Guide

3	Max Bed Number	20	60	Determines how many timers the manager will scan for.
13	Max slave Number	0	7	Determines how many Managers the master manager will scan for. You can have up to 8 T-Max® Managers in a single installation. For only one manager in the installation, leave 0.
14	Manager Number	0	7	Sets the address of the manager. One manager must be at 0. Any additional manager must be set to a unique address, 1 through 7.
18	Manual Session Counts	0	65535	This shows how many times the T-Max® Manager has been ran manually.
21	Error Report Time	100	100	Time between errors before the T-Max® Manager will report the error.

CONFIGURING THE T-MAX® MANAGER TOUCH

- 1) Apply power to the T-Max® Manager Touch. The T-Max® Manager Touch will scan the network to find all T-Max® 3W G2s and T-Max® Certified timers.
- 2) Press the Configure Button. The following Screen will appear:



A sheet was provided showing the factory default settings for each security level and security level descriptions. You must enter security level 3.

Once your Security Level for level 3 is entered, the display will return to the home screen. A shield with a 3 will indicate that you have entered Security Level 3. It will be displayed on the bottom of the display.

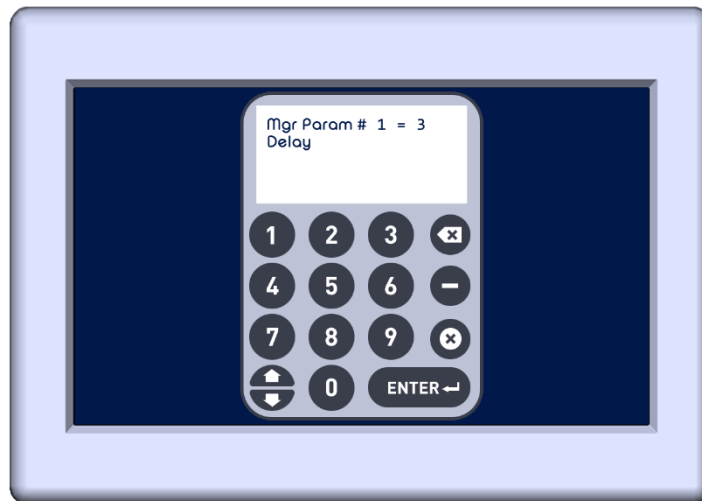


User Guide



3) Press the Configure Button. Type 802 then enter go to the Manager Configuration Screen.

4) The following screen will appear:



Parameter 1 is the T-Max® Manager delay. The value after the equal sign is the current delay time the Manager is set to in minutes.

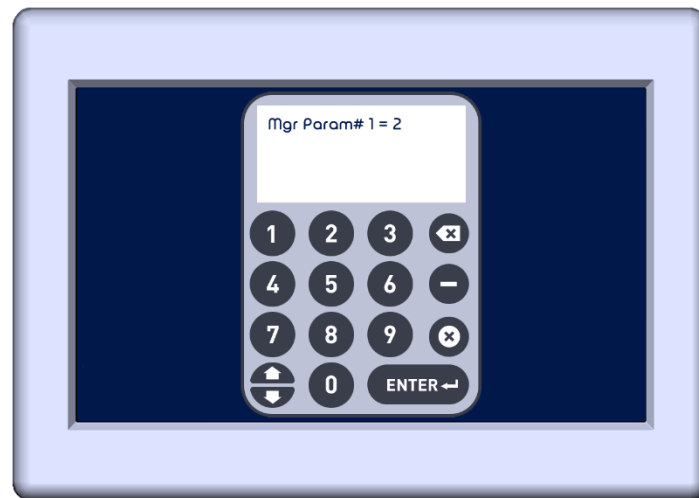
The delay time is the time for the customer to prepare to get into the piece of equipment before the unit energizes. The delay time can be set from 0 to 10 minutes.

5) If you want to keep the current delay time, press the Up button to go to the next parameter. To change the delay time, press the Enter button. The following screen will appear:



Enter the delay time in minutes you want (example to 2), followed by the Enter button. This will set the delay time to 2 minutes.

6) The display will return as follows:



Press the Up button to go to the next parameter (Parameter 2 – Auto Start Mode). Using the T-Max® Manager Touch manager parameter table at the beginning of this section, set the parameters to their desired values in the T-Max® Manager Touch. At any time, you want to go back, press the down button. To exit, press the X button. You can do this at any time once you have set the desired parameters.

The most commonly used parameters are 1 (Delay), 2 (Auto Start Mode) and 3 (Max Bed Number). The other parameters are not usually changed.

7) Press the X button once the setup is complete. The T-Max® Manager Touch will reset.



TIMER PARAMETERS

T-Max® Series timers have a wide variety of parameters to allow them to function the way you want them to. Table 2 shows the parameters for the T-Max® 3W G2 timers. Although most of the basic parameters will be the same throughout the T-Max® Series, various T-Max® Certified times might have different parameters. Refer to those units' user's guides or contact that equipment's manufacturer for a list of parameters.

Table 2 - Parameter Numbers for Observing and Changing Parameters.

Parm #	Description	Max #	Default	Notes
1	Address	255	254	Address of T-Max® 3W G2
2	Beep Mode	1	0	Used for High Power beds. 0=Alarm only, 1=Alarm and Flip
3	Delay Time	10	0	Delay in minutes stored in the T-Max® 3W G2.
5	Session Counts	65535	0	Total session counts for T-Max® 3W G2s.
6	Lamp Hours	65535	0	Bulb hours for each bed.
7	Bed Hours	65535	0	Number of hours a bed is on.
8	Manual Session Counts	65535	0	Counts the number of sessions the T-Max® 3W G2 has run while in Stand Alone Mode
9	Clean Room	1	1	0 = Clean Room Disabled, 1 = Enabled
10*	Manual Lockout	1	0	0 = Stand Alone Enabled, 1 = Disabled
13	Cool Down Mode	10	0	0 = Disabled, 1-10=Enabled. Time delay in minutes allowing bed to cool.
15	Fixed Session Counts	65535	0	Counts number of sessions ran through the T-Max® 3W G2. This value cannot be changed at all. Used as point of reference.
20	External Speaker	1	0	0 = Speaker on T-Max® 3W G2, 1 = External Speaker will be used.
21	Pause Mode	1	0	0 = When the session is paused, time will continue to count down. 1 = When session is paused, session time will stop counting down.
22	Auto Bed Shut Off	1	0	For T-Max® Intercom Systems Only. 0 = When timer is called bed will stay on, 1 = When timer is called, bed will stuff off automatically.
24	Max Address	1	0	0 = The T-Max® 3W G2 will only go to address 99. 1 = T-Max® 3W G2 will go to address 128.
25	Start/Stop Clean Room Clear	1	0	0 = Only the Set button can be used to clear the Clean Room. 1 = Either the Set or the Start/Stop button can be used to clear the clean room.



User Guide

* If Manual Lockout is enabled, the T-Max® 3W G2 cannot operate as a stand-alone timer. In the event of a T-Max® Manager failure, this parameter cannot be enabled at the T-Max® 3W G2.

SECURITY LEVELS

There are 5 security levels on the T-Max® Manager Touch. When the Menu button is pressed, the display will prompt you for a security number. Refer to the enclosed Security number sheet on how to change security numbers.

Level 0 - Computer Control Level

Sessions can be monitored, but not started manually.

Level 1 - Employee Level

Session operation only. No parameters can be observed or changed.

Level 2 - Supervisor's Level

Parameters values can be observed but not changed.

Level 3 - Manager's Level

Parameters can be observed and changed. Security numbers cannot be changed.

Level 4 - Owner's Level

This level allows the changing of Security numbers for access.

A shield at the bottom of the screen with a number will reflect what security level you are in for level 1, 2 and 3.

CHECKING AND CHANGING MANAGER AND TIMER PARAMETERS

Once you have entered the security number to edit parameters, return to the configuration page. Use the following codes to edit parameters set:

800 – Check timer parameters such as lamp hours, session counts, etc.

801 – Check and change timer parameters such as lamp hours, session counts, etc.

802 – Check and change manager parameters.

CHECKING TIMER PARAMETER NUMBERS

Parameters are values stored in each T-Max® 3W G2s such as Lamp Hours, Session Counts, etc. Table 1 shows the parameter numbers and details about them.



User Guide

To get or change parameters, do the following:

- 1) Press the Configure button on the T-Max® Manager Touch. The following screen will appear:



- 2) Enter the Security Number for Level 2 (default: 2222). Then Enter.

The home screen will appear with a shield with the number 2. This indicates you have entered Level 2 security level.



- 3) Press the Configure button. Press 800 then Enter. The following screen will appear:



- 4) Press the Parameter number you want to check, listed in the Table above. The following screen will appear displaying the value for the parameter for the displayed bed.



- 5) Pressing the Up or Down buttons will allow you to scroll through all your beds displayed the value for that parameter for each bed.
- 6) If you want to check another parameter, press the Enter button and enter the next parameter you want to check.
- 7) Press the X button to exit the check parameter mode.

CHANGING TIMER PARAMETER VALUES

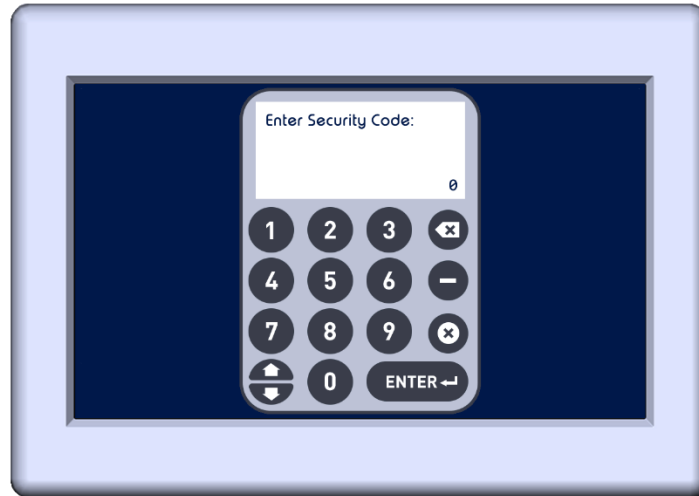


User Guide

Parameters are values stored in each T-Max® 3W G2s such as Lamp Hours, Session Counts, etc. Table 1 shows the parameter numbers and details about them.

To get or change parameters, do the following:

- 1) Press the Configure button on the T-Max® Manager Touch. The following screen will appear:



- 2) Enter the Security Number for Level 3. Then Enter.

The home screen will appear with a shield with the number 3. This indicates you have entered Level 3 security level.



3) Press the Configure button. Press 801 then Enter. The following screen will appear:



4) Press the Parameter number you want to change, listed in Table 2 then press Enter. Press Enter again and the following screen will appear displaying the current value for the parameter for the displayed bed and prompting you to enter the value of the parameter being changed.



5) Enter the new value that you want the value to be for the show parameter for the displayed bed. The display will return to the Send parameters window.

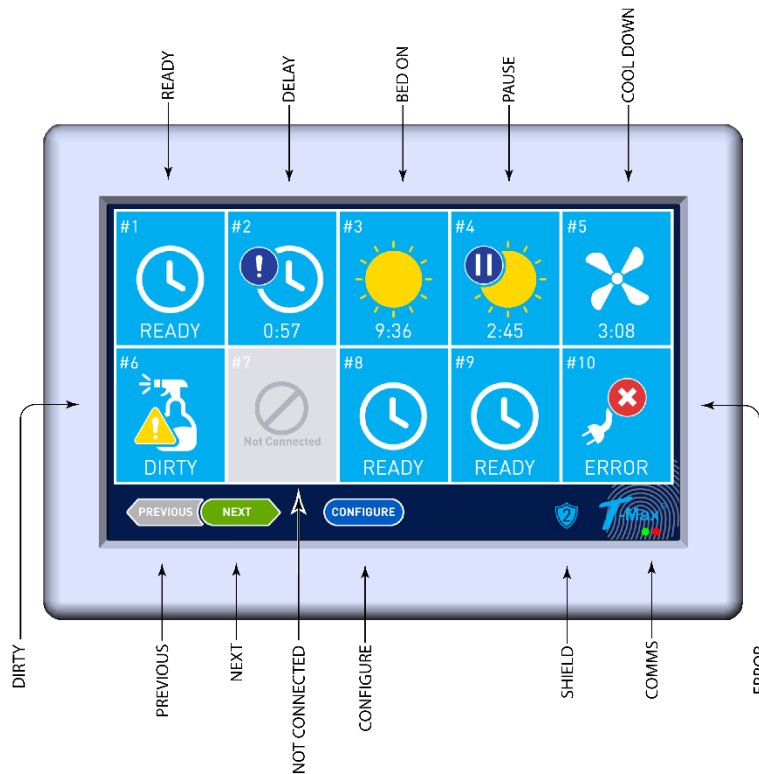
6) If you want to change parameters on another bed, press the parameter number then enter again. The display will read the current bed with that parameters value. Press Up or Down to go to the next bed you want to change that parameter value of. Once the new bed is displayed, you can press Enter and put a new value in for that bed's parameter.

7) Repeat until all parameters are changed for all beds.

8) Press the X button to exit the change parameter mode.

STARTING A SESSION

T-Max® Manager Touch home screen and Timer Status Indications



Not connected means there is no timer at that room number.

Previous and Next – Allows you to go to the next bank of beds, 1-10, 11-20, 21-30, up to 60 beds.

Configure – Enters the configuration mode.

Shield – Indicates what security level mode you entered. No shield means the manager is locked out and no manual sessions can be started.

Red and Green Indicators: Shows communications between T-Max® Manager Touch and timers in the rooms.



User Guide

Computer Icon: a computer controls the T-Max® Manager Touch. Session cannot be started manually during computer operation.



You must be at Security Level 1, 2 or 3 to start sessions manually. Refer to the section to enter the Security Levels if the shield for showing security levels is not displayed at the bottom of the screen.

- 1) Press the Tile for the bed you want to start a session. You may have to press the Next or Previous button until the desired bank of 10 rooms is displayed.



- 2) Enter the time you want to send in minutes.

The screen will return to the screen you were on, with the status and times showing.

Delay: Time for the customer to get ready before the unit energizes.

On: The unit is on.

Dirty: The unit is dirty and needs to be cleaned.

Cool: After a session, some units require time to cool before the next session can be run. Time cannot be sent to a timer during cool down time. The cool down time that is remaining will be displayed.

Ready: The timer is ready for a new session.

Not available: No timer was detected during scan with that room number.



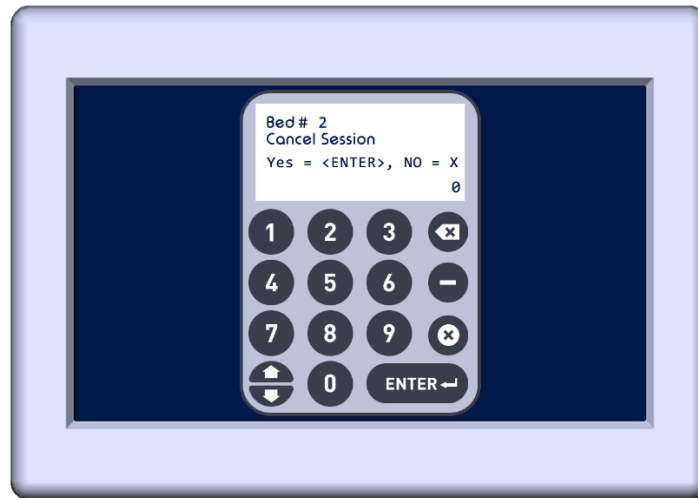
User Guide

Refer to the picture at the beginning of this section for the tile descriptions.

If you don't want to send time to the timer you selected, simply press the X button.

CANCELING A SESSION

Press the tile for the bed you want to cancel a session. You may have to press the Next or Previous button until the desired room number is displayed.



Press ENTER if you want to cancel a session. Press X if you decide not to cancel the session.

This same procedure can be used to clear a "Dirty" indication, described later in this manual.

PAUSING A SESSION

To pause a session, press the Start/Stop button on the timer in the room. The flashing period will stop flashing and stay illuminated. The T-Max® Manager Touch display will show the pause symbol on the tile for that bed with the remaining time.

To restart the session, press the Start/Stop button on the timer in the room. The unit will energize and the tile on the T-Max® Manager Touch will show the ON indication along with the remaining session time.

DIRTY ROOM

Once the session time has elapsed, the display on the T-Max® 3W G2 will show two solid periods only, and the T-Max® Manager Touch will show "Dirty" on the tile for that room. This is an indication that the room needs to be cleaned. To clear the clean room indication, press and hold the Up button on the T-Max® 3W G2 in the tanning room until the two periods disappear and a "0" appears and the Dirty indication on the tile on the T-Max® Manager Touch will clear. To disable the clean room feature, set parameter 9 to a 0.

If the Clean Room and Cool Down Modes are enabled, the clean room will be displayed. If the room is cleaned before the cool down time has elapsed or if the clean room is disabled, a solid period will be



User Guide

displayed on the lower center on the T-Max® 3W G2. The display will read COOL and the light on the left of the T-Max® Manager Touch will flash green. You cannot start a session until the cool down time has elapsed.

COOL DOWN MODE

Cool Down mode is used for beds that require a time to cool down before the next session can be run. High-pressure beds primarily use this. While the T-Max® 3W G2 is in Cool Down Mode, a session cannot be run until the cool down time has expired.

To enable Cool Down Mode, set parameter 13 to the time in minutes you want the cool down time to last on the timer in the room. Setting parameter 13 to 0 disables Cool Down Mode.

After the session ends, the T-Max® 3W G2 will go into Cool Down Mode. A single period will be displayed on the T-Max® 3W G2 and T-Max® Manager Touch will show a fan image with the remaining cool down time. If clean room is also enabled, the clean room will be displayed. The T-Max® Manager Touch display will show Dirty. If the room is cleaned before the cool down time has elapsed or if the clean room is disabled, a solid period will be displayed on the lower center on the T-Max® 3W G2. The T-Max® Manager Touch display will show the fan icon with the cool down time counting down. You cannot start a session until the cool down time has elapsed.

COMPUTER OPERATION

Refer to the ADNET 2K User's Guide for complete instructions about installing and controlling your salon from our ADNET 2K. www.appdig.com/tmaxtimers/html/software_downloads.html

EXPANSION

ADDING BEDS

IMPORTANT: Maximum time for each bed is programmed into the T-Max® 3W G2 or T-Max® Certified OEM Timer at the factory. When ordering the T-Max® 3W G2s, make sure you have the maximum time for each bed available.

One T-Max® Manager Touch can control up to 60 beds. To add beds, simply purchase one T-Max® 3W G2 for each bed that you add.

Setting the address on each new T-Max® 3W G2

Refer to the T-Max® 3W G2 User's guide for instructions on setting the address.

Setting the max. bed number on the T-Max® Manager Touch

If you are using a computer, refer to **MANUAL OPERATION/CONFIGURING T-Max® Section** on setting the Max. Bed Number (Parameter 3) on the T-Max® Manager Touch.



ADDING T-MAX® MANAGER TOUCH CONTROLLERS

T-Max® Series can have up to 8 T-Max® Manager Touch's. A computer can be connected to each T-Max® Manager Touch. If you are wired, you will need to purchase a slave kit for each T-Max® Manager Touch you want to add. Refer to **INSTALLATION/ T-MAX® MANAGER TOUCH SECTION** for instructions on connecting a PC to each T-Max® Manager Touch. To add T-Max® Manager Touch, follow these steps:

1) Apply power to each Slave T-Max® Manager Touch.

Refer to **MANUAL OPERATION/CONFIGURING THE T-MAX® MANAGER TOUCH SECTION** on setting the manager number (Parameter 14) on each Slave T-Max® Manager Touch. Make sure each Slave T-Max® Manager Touch has a unique address.

2) Connect each slave T-Max® Manager Touch to the Master T-Max® Manager Touch using the slave kit; or to the wireless G2 Access Point.

3) Apply power to the Master T-Max® Manager Touch.

4) Refer to **MANUAL OPERATION/CONFIGURING THE T-MAX® MANAGER TOUCH SECTION** and Set the Max. Slave Setting (parameter 13) on the Master T-Max® Manager Touch.

5) Cycle power to the Master T-Max® Manager Touch.

Note: Each Slave T-Max® Manager Touch must be powered up before you power the Master T-Max® Manager Touch. Each computer can be used to cancel a session, start a session, and monitor all sessions. However, parameters (bulb hours, session counts, etc.) can only be monitored and changed from the Master T-Max® Manager Touch.

OTHER FEATURES AND OPTIONS

T-MAX® MONITOR/PLUS

The T-Max® Monitor/Plus allows the salon owner to check the status of all the beds at any place in the salon.

The T-Max® Monitor/Plus has 16 LED displays showing the remaining session time. Multiple T-Max® Monitor/Pluses can be connected. The T-Max® Monitor/Plus can be connected anywhere in the T-Max® chain. You can connect them at the front desk if you want to glance over and see the remaining session time, or you can place them anywhere else in the salon so the cleaning staff can see how much session time is remaining for each room. Contact your dealer for more information.

HIGH PRESSURE (SINGLESIDE) BEDS

The T-Max® 3W G2 has an alarm that will beep for 10 seconds halfway through the session informing the customer to turn over.

If you are using a computer, refer to ADNET 2K User's Guide and set parameter 2 to a 1 for the bed that you are enabling the Mid-Session Flip alarm. If you are using the T-Max® Manager Touch manually, refer to



User Guide

MANUAL OPERATION/ CHANGING TIMER PARAMETER NUMBERS SECTION on how to send parameters manually.

INSTALLING EXTERNAL SPEAKER (OPTIONAL)

If the speaker on the T-Max® 3W G2 is not loud enough, a T-Max® Speaker that connects to the T-Max® 3W G2 is available. To install the T-Max® Speaker do the following: See Figure B for J6 location and J99 and J100 locations and jumper positions.

- 1) Connect the cable on the T-Max® Speaker to the J6 on the back of the T-Max® 3W G2
- 2) Set Parameter 20 to a 1 Refer to **MANUAL OPERATION/ CHANGING TIMER PARAMETER NUMBERS** if you are using the T-Max® Manager Touch manually. Refer to the T-Max® 3W/G2 user's guide for setting the parameter on the T-Max® 3W/G2.

CONNECTING A REMOTE PUSH BUTTON TO THE T-MAX® 3W G2 (OPTIONAL)

A T-Max® 3W G2 can be used to control another T-Max® 3W G2. This is ideal for small salons that are not using a T-Max® Mgr. Two T-Max® 3W G2s are required for remote single bed control.

A remote push button can be connected to the T-Max® 3W G2 to start sessions. You can get an external start kit from your distributor that provides a 50' cable with a pushbutton and a wall mounting plate.

Connect the wires from your external push button circuit to the "EXT START" Screw terminals on the back of the T-Max® 3W G2.

When the external push button is pressed a contact closure is applied to the Ext. Start screw terminals on the back of T-Max® 3W G2.

To start a session, press the Up or Down button on the T-Max® 3W G2 to set the time, then when ready, press the Remote push button instead of the Start/Stop button on the T-Max® 3W G2.

T-MAX® ENCLOSURE (OPTIONAL)

The T-Max® Enclosure is a metal box that connects to a T-Max® 3W G2 so that the unit can either be hung on a wall or set on a table. Tear drop holes on the back of the T-Max® Enclosure allow for easy installation.

The T-Max® Enclosure is slanted to make the T-Max® 3W G2 push buttons and display easy to access and read. The T-Max® 3W G2 can fit so that it is slanted up or down. Slanted up is ideal for setting the timer on a desk. Slanted down is great for hanging the T-Max® 3W G2 on a wall.

To install the T-Max® 3W G2 to the T-Max® Enclosure, first run the cable through the wire holes on the T-Max® Enclosure and connect them to the T-Max® 3W G2 as described in Section 3.3. Connect the grommets to hold the wires tight. Plug any unused holes with the provided plastic plugs. Connect the T-Max® 3W G2 to the T-Max® Enclosure using the four screws provided with the T-Max® 3W G2.



User Guide

FIGURE A - FRONT VIEW OF THE T-MAX® 3W G2



T-Max® 3W G2

FIGURE B - REAR VIEW OF T-MAX® 3W G2 CIRCUIT BOARD

J4 - PWR IN 9-12V: Connect 9-12V power supply to this terminal.

J3 - Contact: Connect the two wires from the tanning bed to these screw terminals.

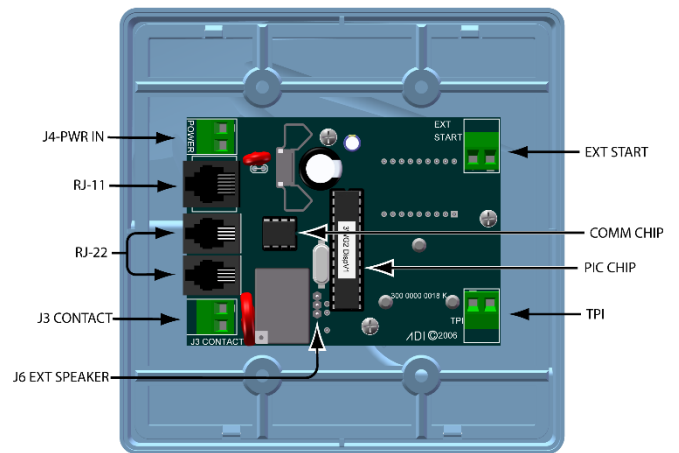
J6: Connector to connect external speaker for higher volume alarm.

EXT Start – Connects to momentary external start button.

TPI - Connects to front desk controller not made by Applied Digital, Inc.

RJ-11 – Connects to the G2 Access point for wireless communications.

RJ-22 – Connects to T-Max® cable for wired communications.



T-Max® 3W G2 Connections



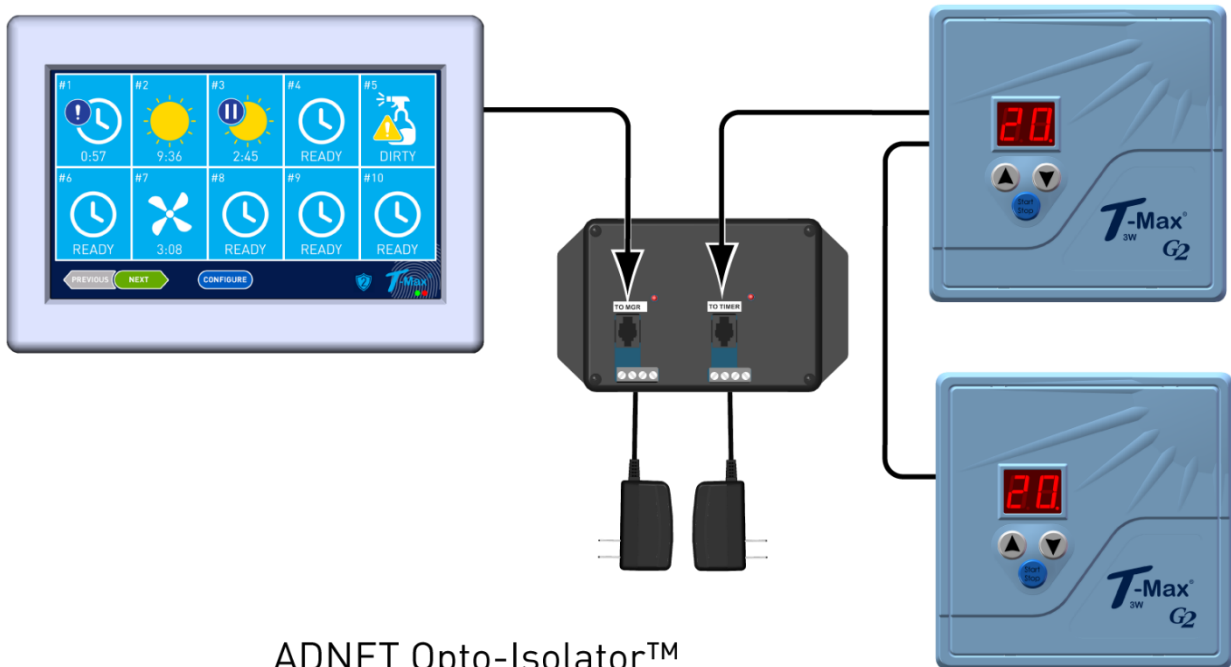
User Guide

FIGURE C - T-MAX® MANAGER TOUCH



Front View of the T-Max® Manager Touch

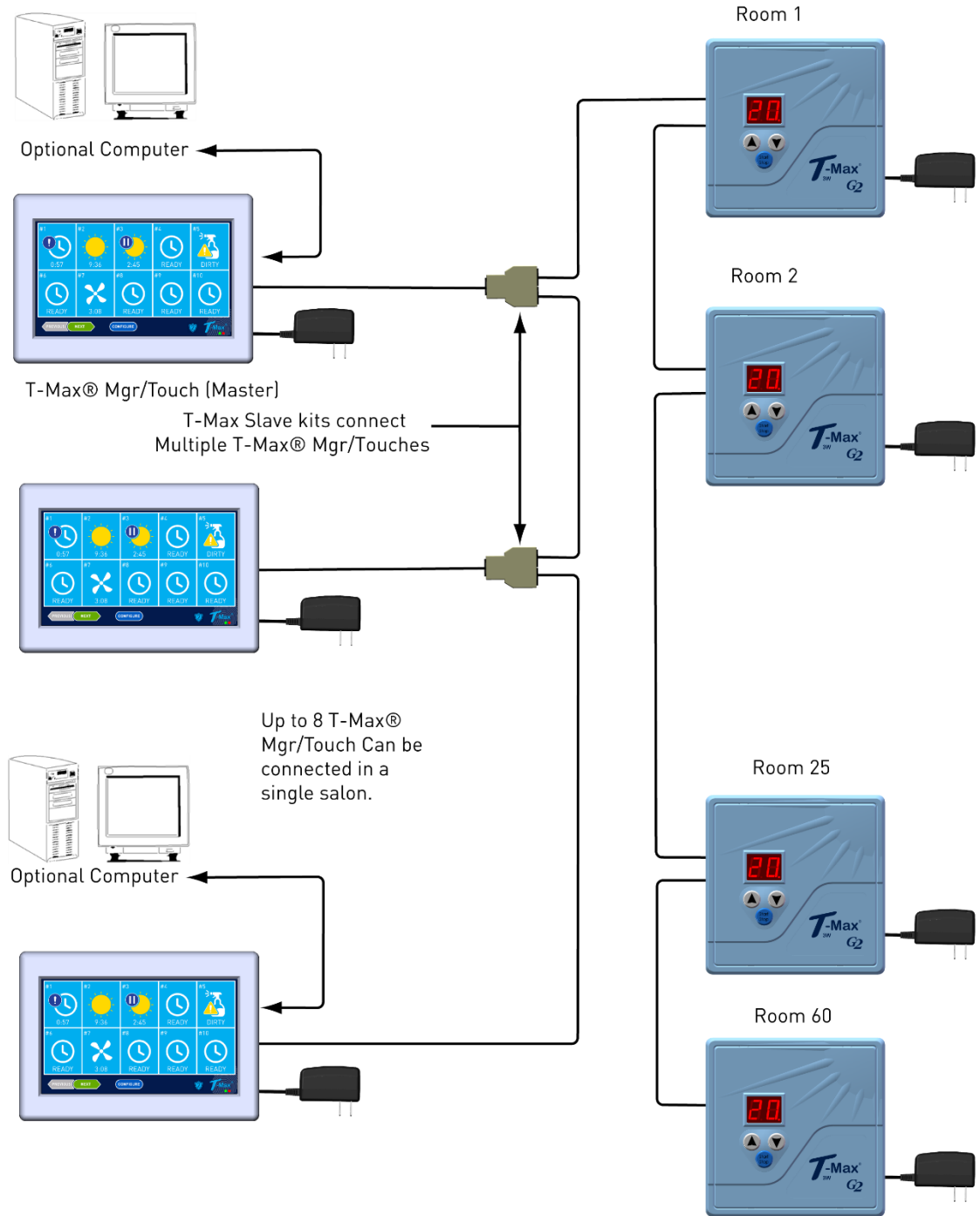
FIGURE D - 485-ISO OPTICAL ISOLATOR



ADNET Opto-Isolator™

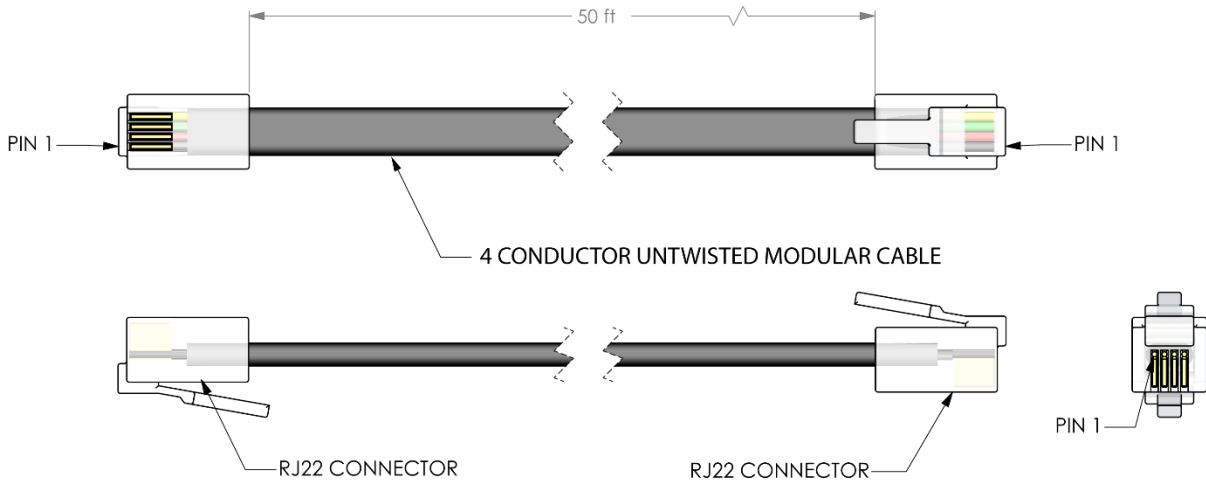
To help prevent damage due to power surges or errors due to ground loop problems, install the 485-ISO as shown here. You can also install one in the middle of your daisy-chain as a repeater to amplify the signal for large salons. This may be necessary for salons with more than 25 tanning beds.

FIGURE E - MULTIPLE CONFIGURATIONS



Connect Multiple T-Max® Manager Touch's, Computers, and up to 60 Beds!

FIGURE F - MODULAR CABLE PINOUTS



Use this diagram if you are making your own cables.

Important!!!

Applied Digital, Inc. highly recommends that you do not modify the cables provided with each T-Max® 3W G2. If you need longer cables, contact your dealer. All cables are pre-tested at the factory for proper connection. If you are not careful in making your own cables, the system may not work properly!

TROUBLESHOOTING

The T-Max® Series is designed for years of trouble-free service. However, if a problem does arise, please follow the following troubleshooting steps before calling technical support.

TROUBLESHOOTING

1) T-Max® Manager Touch Not Powering on.

Make sure that the transformer is plugged into the wall and into the power input on the T-Max® Manager Touch. Try plugging the T-Max® Manager Touch into a different outlet. If you are using a surge suppresser or UPS backup system, try plugging the T-Max® Manager Touch directly into the wall outlet. Check the circuit breaker in your building to make sure it's on. Use a voltmeter to measure the voltage on the transformer on the end which connects to the T-Max® Manager Touch.

2) The T-Max® Manager Touch does not show any beds, and the display shows nothing.

This is an indication the program loaded in the T-Max® Manager Touch has lost its program or has been corrupted. Run the T-Max® Manager Touch Utility to reload the program into the T-Max® Manager Touch.

3) The T-Max® Manager Touch does not see any beds.

Go through the Quick installation setup in Section 2. Cycle power on the T-Max® Manager Touch. The T-Max® Manager Touch will rescan the network. Make sure each T-Max® 3W G2 has a unique address. Swap the modular cable between the T-Max® Manager Touch and the T-Max® 3W G2 that it is connected to.

4) When going through the Quick Installation set-up, when I press 888 then Enter on the T-Max® Manager Touch to set the addresses, some or all of the T-Max® 3W G2s do not go to 99 and buzz.

Check the cable between the T-Max® Manager Touch and the first T-Max® 3W G2. Swap the T-Max® 3W G2 in the first room with the last one.

5) When power is applied to the T-Max® Manager Touch, bed 1-5 show on the T-Max® Manager Touch, but the rest of my beds do not show.

Go through the Quick Installation in Section 2. Make sure that power is applied, and modular cables are connected to each T-Max® 3W G2. Try a new modular cable between the last T-Max® 3W G2 displayed and the first T-Max® 3W G2 that does not show on the T-Max® Manager Touch in the daisy chain. If you don't have a spare cable, swap the cable between the last T-Max® 3W G2 that appears on the T-Max® Manager Touch and the first T-Max® 3W G2 that does not appear on the T-Max® Manager Touch with a modular cable that is connected between two T-Max® 3W G2s that appear on the T-Max® Manager Touch display. If the problem follows, the modular cable is either bad or wired incorrectly. Check the modular cable pinouts on the defective cable (refer to Section 12.9, Figure I). If the problem does not arise, swap the first T-Max® 3W G2 that does not appear on the T-Max® Manager Touch in the daisy chain with one that does. If the problem follows, return the defective T-Max® 3W G2 for repair. If the problem does not arise, swap the last T-Max® 3W G2 that appears on the T-Max® Manager Touch with one of the other T-Max® 3W G2s that appears on the T-Max® Manager Touch.

5) When running ADNET2K, the computer beeps, the screen reads Lost Communication.

This means that ADNET 2K cannot locate the T-Max® Manager Touch. Make sure the USB cable is connected to the computer and the T-Max® Manager Touch. Make sure there is power to the T-Max® Manager Touch. If it still does not work, determine the comm port number for the T-Max® Manager Touch. This will be in the manufacture computer literature. Then Click Setup in ADNET 2K. Select the correct COM port setting in the upper left corner of the display. Click OK, then Start.

6) The Slave T-Max® Manager Touch does not show any beds.

Check and make sure the modular cable is connected to the Slave T-Max® Manager Touch. Recycle power to the Master T-Max® Manager Touch. Cycle power to the Slave T-Max® Manager Touch then cycle power to the Master T-Max® Manager Touch.

7) How do I make the T-Max® 3W G2s work as stand-alone timers?

Remove power from the T-Max® Manager Touch. Unplug power from each T-Max® 3W G2, wait 5 seconds, then plug them back in. On the T-Max® 3W G2, press the Set button to set time, then press the Start/Stop button to



User Guide

start the session. Power to the T-Max® Manager Touch must stay off while the T-Max® 3W G2s are being used as independent timers.

8) When I start a session manually, the session time will not start.

Press the Configure button. The following message will appear: Enter Security Code. Enter your security number for security level 1 (See the enclosed Security Level Sheet). A Shield with a 1 will appear on the bottom of the display. You can then start sessions manually.

9) I can start sessions from the Master T-Max® Manager Touch, but not the Slave T-Max® Manager Touch

Enter Security Level 1 (See your enclosed Security Sheet). Enter Security Code. Enter your security number for security level 1. A Shield with a 1 will appear on the bottom of the display. Cycle power to both the Slave T-Max® Manager Touch then the Master T-Max® Manager Touch. Check and make sure the modular cable is connected to the Slave T-Max® Manager Touch. Recycle power to the Master T-Max® Manager Touch. Go into the Master T-Max® Manager Touch parameter mode (Security Level 3) and set the Max Slave Number to 7. Cycle power to the Slave T-Max® Manager Touch then cycle power to the Master T-Max® Manager Touch.

ERROR CODES

Error codes have been incorporated in the T-Max® 3W G2 and the T-Max® Manager Touch to aid in troubleshooting.

Error T-Max® 3W G2	Codes T-Max® Manager Touch	Description	Possible Solution
N/A	E0	Unrecognized Parameter	Load the T-Max® Manager Touch with the newest version of software.
91	E1	EEPROM Error	1) Cycle power on T-Max® 3W G2. If this does not fix problem, replace the max time chip on T-Max® 3W G2.
92	E2	Current Sense Error - Current Off Session has started but bed is off.	<p>Check to see if the bed is off or illuminates momentarily.</p> <p>Note: If you are not using a T-Max® Sentry, set parameter 4 to 0 on the T-Max® 1A or T-Max® 3A</p> <p>If bed is off:</p> <ol style="list-style-type: none"> 1) Check the power to bed. 2) Check that bed is plugged into the wall outlet 3) Check circuit breaker for the bed. 4) Swap T-Max® 3W G2 with one that is working. <p>If bed illuminates momentarily?</p> <p>Have electrician check beds current draw. If the bed draws less than 10AMPS, wire from the bed needs to be wrapped around the T-Max® Sentry™ one time. Refer to T-Max® 3W G2 User's Guide.</p>



User Guide

93	E3	Current Sense Error – Bed On	If you are using a T-Max® 3W G2, cycle power to the timer. If the problem persists, replace the timer. If timer is in the tanning bed, contact the tanning bed manufacturer.
94	E4	Max Time Error - T-Max® 3W G2 reporting wrong Max time.	<p>1) Cycle power to the T-Max® 3W G2.</p> <p>2) Replace the max time chip on the back of the T-Max® 3W G2.</p>
N/A	E6	Checksum Error - T-Max® Manager Touch received bad value from T-Max® 3W G2	<p>If you are experiencing E6 errors on the T-Max® Manager but the timer does not show an error code, refer to the section on this site for communications errors in either the wired or wireless installations, depending on your configuration.</p> <p>If 96 appears on the timer in the room, the timer has reached its profit-sharing parameter. Usually caused by a power problem. Do a factory reset on the timer in the room.</p>
N/A	E7	Time Out Error - The T-Max® Manager Touch did not receive the correct information from the T-Max® 3W G2	If you are experiencing E7 errors on the T-Max® Manager, this is an indication that the controller is not seeing the timer or timers in the rooms. Refer to the section on this site for communications errors in either the wired or wireless installations, depending on your configuration.

